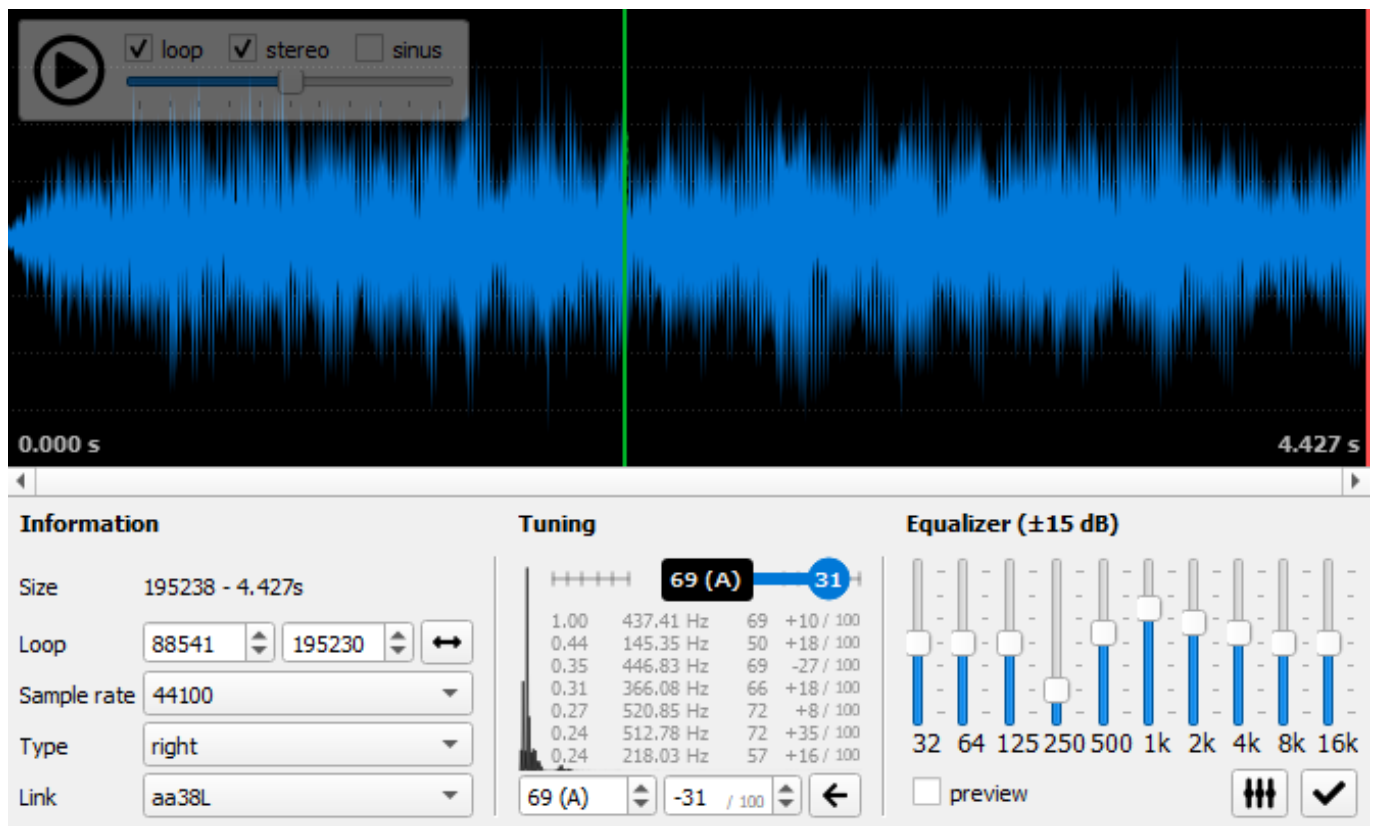


Version 2.2 of Polyphone doesn't include a lot of new things but brings several interface improvements and fixes small inconsistencies.

Interface improvements

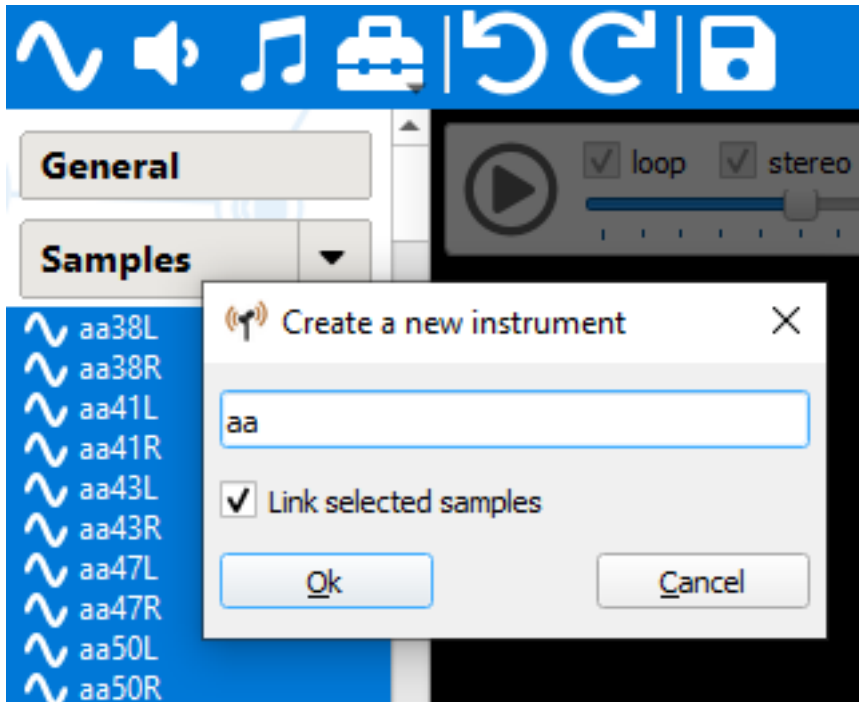
Sample tuning area redesigned

The playback commands are now in an overlay over the sample display. Space is thus saved for displaying the harmonic content of the sample and the estimation of the pitch. In the image below, the estimated pitch is 69 plus 31 hundredths of a semi-tone. Root key is thus 69 and the correction to apply is -31.



New element dialog

When creating a new instrument, it is possible to automatically link the selected samples from the tree view if samples are selected. The same occurs if you select instruments and you want to create a preset.



Modulator panes and tree view can be resized

Holding a left mouse click on the right border of the tree view or on the top border of a modulator area allows you to resize the pane.

Single instance of the application

Every time you double-click on a soundfont file, the same instance of the application will be used. You will now have only one window open for Polyphone.

Solo mode focused on selection

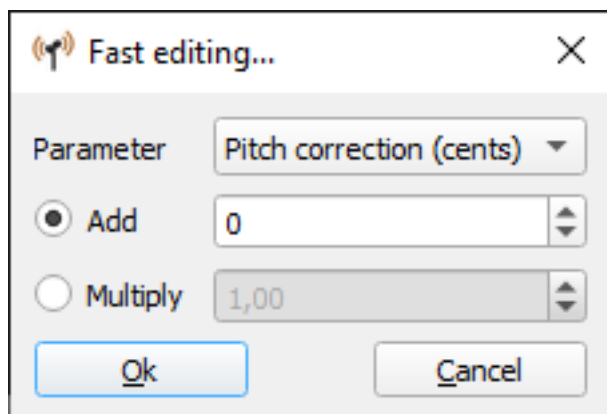
When enabling this option, only the selection will sound when you test your instrument or preset with the keyboard.

| | Global | ee38L | ee38R | ee41L | ee41R | ee43L |
|---------------------|--------|-------|-------|-------|-------|-------|
| Key range | 0-96 | 0-38 | | | | 42-44 |
| Velocity range | | | | | | |
| Attenuation (dB) | | | | | | |
| Pan [-50;50] | | -50.0 | | | | -50.0 |
| Loop playback | | | | | | |
| Sample root key | | 52 | 52 | 64 | 64 | 64 |
| Root key | | 38 | 38 | 41 | 41 | 43 |
| Tuning (semi-tones) | | | | | | |

mute
 solo
 unmute all
 solo on selection

New tool for editing sample properties

It will be possible for example to add a same value to the same property of different samples.



Various fixes

- applying the EQ will now provide a result close to the EQ preview
- the loop playing mode can be changed during sample playback
- wav samples are loaded with the right pitch correction
- renaming with a different case is possible
- transposition tools for samples and instruments correctly adapt root key / correction
- the extra CPU needed to display a table has been removed